



User Guide 1.0
Ocee Design
Forum

Ocee Design. Forum

Content Creation Sheet

Date: 26.11.15

Revision: 1.0

Contents

Page Number	Data Sheet
0	Predefined Types
1	Straight
2	Convex
3	Concave
4	Table
5-7	User Guide

Forum. Straight



Predefined Types

Family Type	Width	Depth	Height
Armchair	780	820	890
Chair	580	820	890
Chair with Left Arm	680	820	890
Chair with Right Arm	680	820	890

Material Options

Range
of
Fabric

Seat and Back Fabric

Forum. Convex



Predefined Types

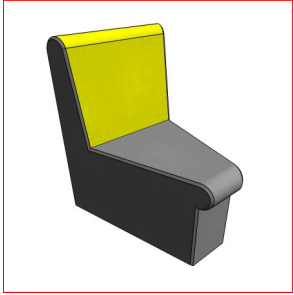
Family Type	Width	Depth	Height
Convex Corner	490	820	890

Material Options

Range
of
Fabric

Seat and Back Fabric

Forum. Concave



Predefined Types

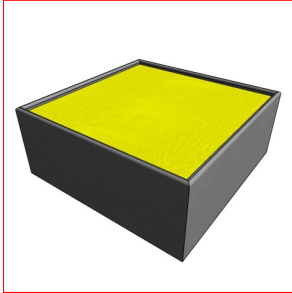
Family Type	Width	Depth	Height
Concave Corner	680	820	890

Material Options

Range
of
Fabric

Seat and Back Fabric

Forum. Table



Predefined Types

Family Type	Width	Depth	Height
Table	770	770	300

Material Options

Range of Fabric

Base Fabric

Maple

Oak

Beech

Table Finish

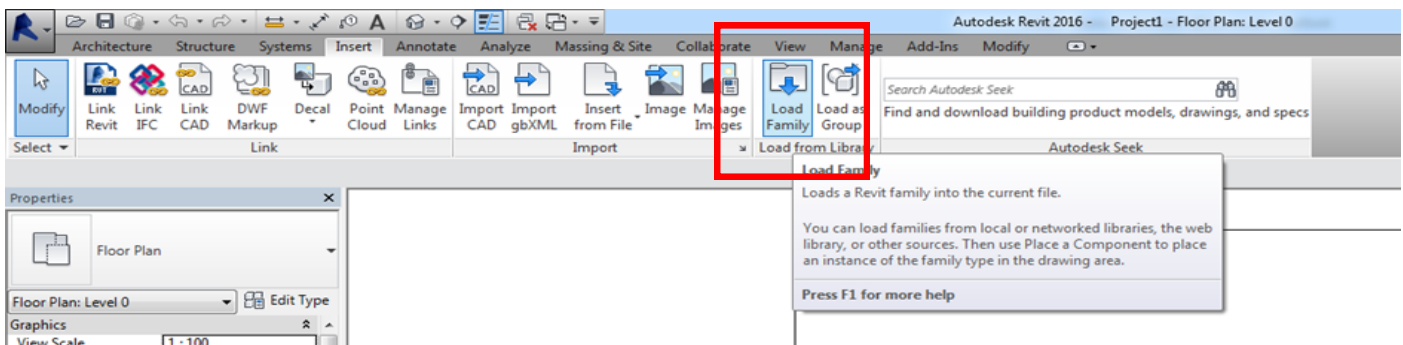
Forum. Your Revit Guide

A simple guide to using Ocee Design Revit Ready files.

1. LOAD IT

The Forum range consists of 4 Revit Families, this contains predefined types as outlined above in the predefined types and the manufactures brochure.

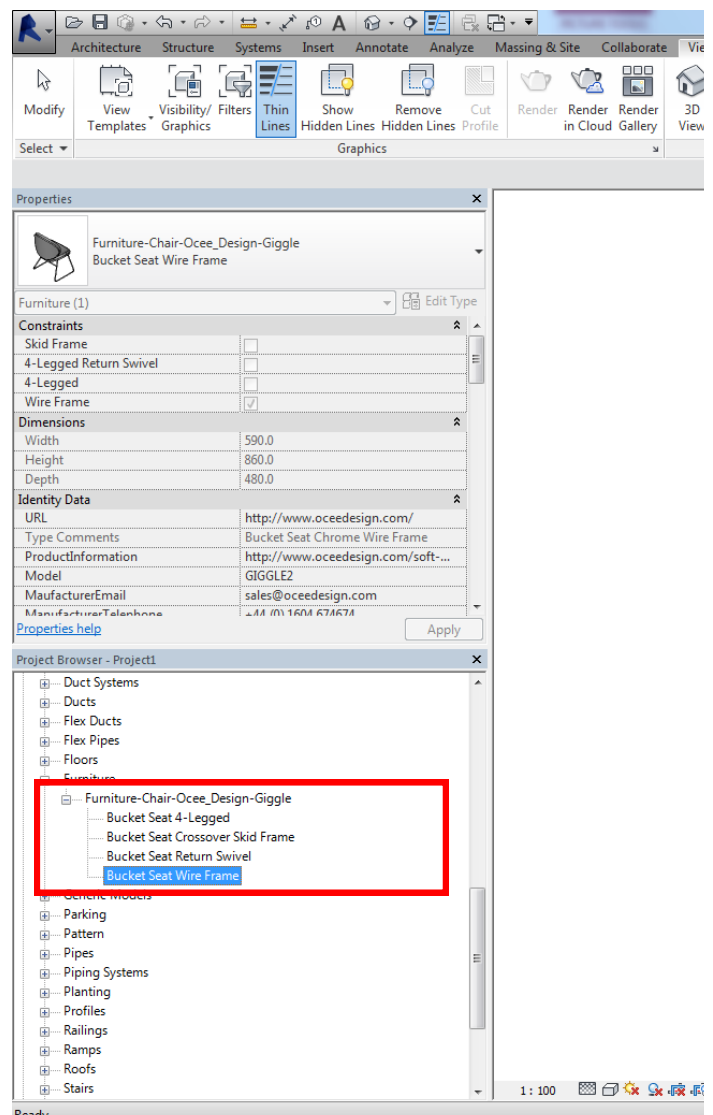
After downloading and saving the file to a suitable location go to 'Insert Tab/Load Family...'



Forum. Your Revit Guide

2. USE IT

Once your family is loaded in, it will be located in the 'Project Browser/Families/Furniture' tab. Types are named in a way to ensure ease of selection. Click and drag your chosen item into your floor plan.



Forum. Your Revit Guide

3. CUSTOMISE IT

Once an item is selected it will turn blue, the properties panel will then display the parameters available. Here you will be able to make changes to the finishes. All material options will load in with the family, click the 'materials and finishes' parameter to view.

Please note— The fabric type will determine the fire rating. Please complete 'FireRating' Parameter once selection has been made.

