



User Guide 1.0
Ocee Design
Stretch

Ocee Design. Stretch

Content Creation Sheet

Date: 11.11.15

Revision: 1.0

Contents

Page Number	Data Sheet
0	Predefined Types
1	Sofa
2	Left
3	Right
4	Corner
5-6	User Guide

Stretch. Sofa



Predefined Types

Family Type	Width	Depth	Height
Single Armchair	1000	800	770
Two Seater with Arms	1750	800	770
Three Seater with Arms	2340	800	700

Material Options

Range
of
Fabric

Seat and Shell Finish

Silver

Beech

Oak

Leg Finish

Stretch. Left Arm Only



Predefined Types

Family Type	Width	Depth	Height
Two Seater with Left Arm Only	1470	800	770
Three Seater with Left Arm Only	2070	800	700

Material Options

Range
of
Fabric

Seat and Shell Finish

Silver

Beech

Oak

Leg Finish

Stretch. Right Arm Only



Predefined Types

Family Type	Width	Depth	Height
Two Seater with Right Arm Only	1470	800	770
Three Seater with Right Arm Only	2070	800	700

Material Options

Range
of
Fabric

Seat and Shell Finish

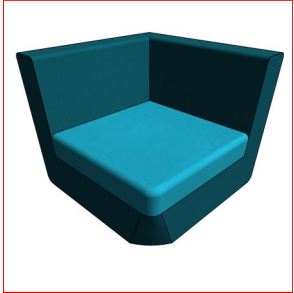
Silver

Beech

Oak

Leg Finish

Stretch. Corner Unit



Predefined Types

Family Type	Width	Depth	Height
Corner Unit	800	800	770

Material Options

Range
of
Fabric

Seat and Shell Finish

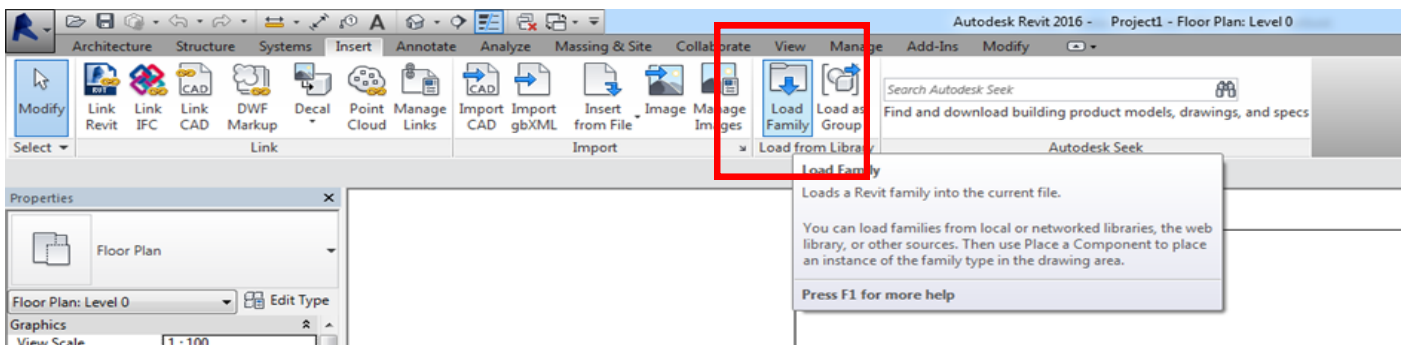
Stretch. Your Revit Guide

A simple guide to using Ocee Design Revit Ready files.

1. LOAD IT

The Stretch range consists of 4 Revit Families, this contains predefined types as outlined above in the predefined types and the manufactures brochure.

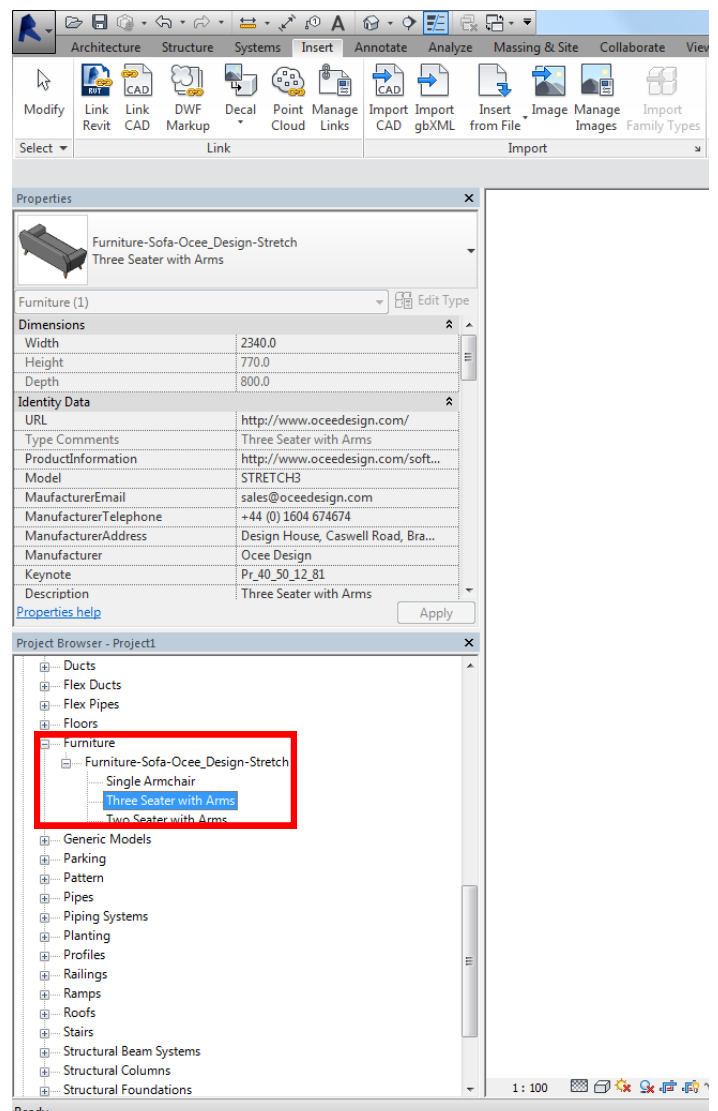
After downloading and saving the file to a suitable location go to 'Insert Tab/Load Family...'



Stretch. Your Revit Guide

2. USE IT

Once your family is loaded in, it will be located in the 'Project Browser/Families/Furniture' tab. Types are named in a way to ensure ease of selection. Click and drag your chosen item into your floor plan.



Stretch. Your Revit Guide

3. CUSTOMISE IT

Once an item is selected it will turn blue, the properties panel will then display the parameters available. Here you will be able to make changes to the finishes. All material options will load in with the family, click the 'materials and finishes' parameter to view.

Please note— The fabric type will determine the fire rating. Please complete 'FireRating' Parameter once selection has been made.

