



User Guide 1.0
Ocee Design
Venus

Ocee Design. Venus

Content Creation Sheet

Date: 13.11.15

Revision: 1.0

Contents

Page Number	Data Sheet
0	Predefined Types
1	Tub Chair
2-4	User Guide

Venus. Tub Chair



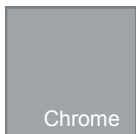
Predefined Types

Family Type	Width	Depth	Height
Tub Chair on 4 Angled Chrome Leg	460	460	840
Tub Chair on 4 Curved Chrome Leg	460	460	840

Material Options



Seat and Back Fabric



Base Finish

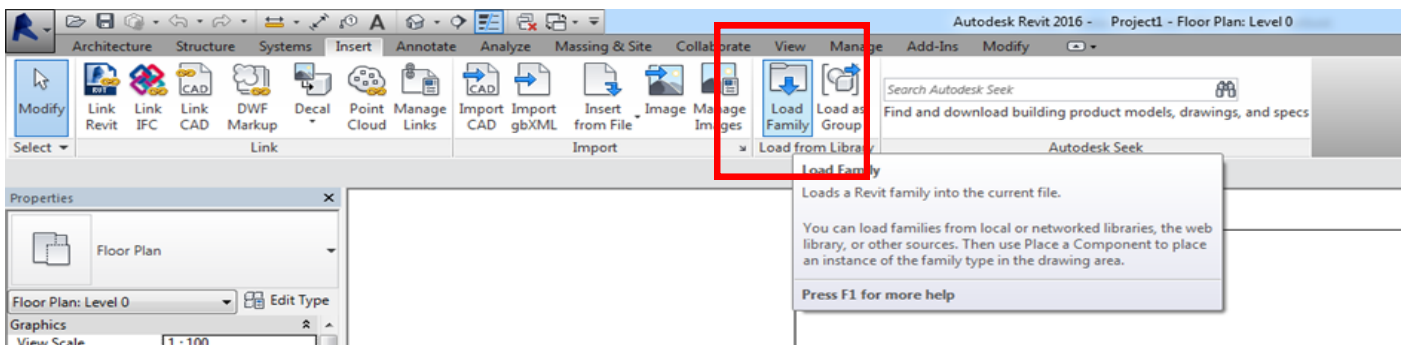
Venus. Your Revit Guide

A simple guide to using Ocee Design Revit Ready files.

1. LOAD IT

The Venus range consists of 1 Revit Families, this contains predefined types as outlined above in the predefined types and the manufactures brochure.

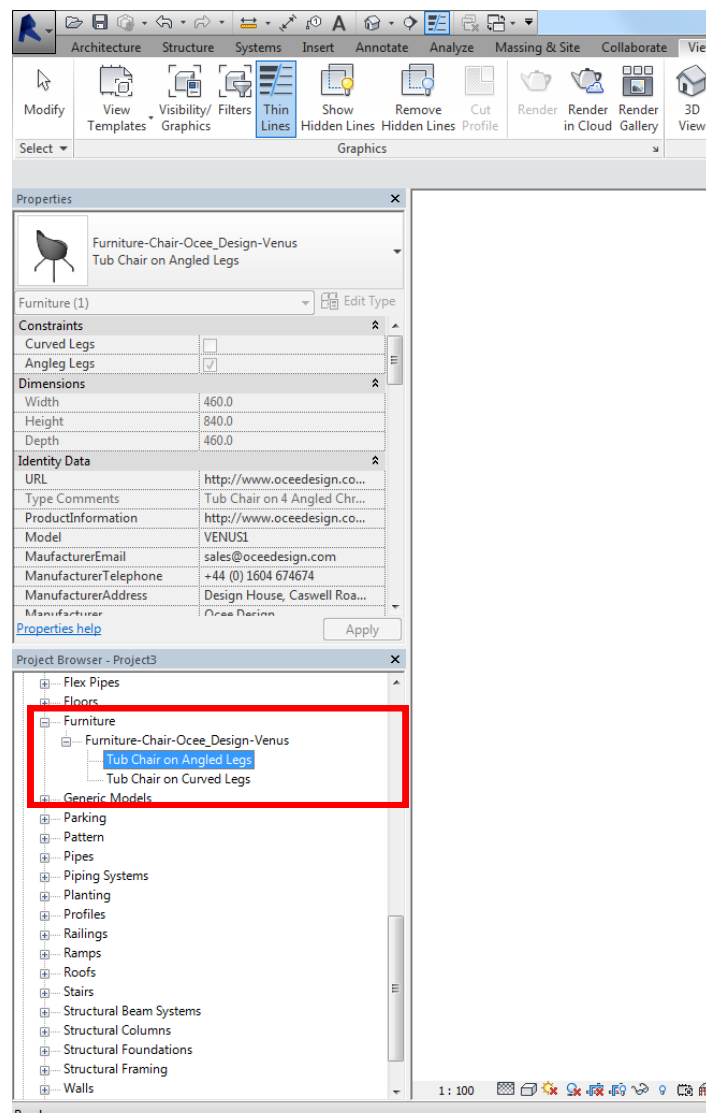
After downloading and saving the file to a suitable location go to 'Insert Tab/Load Family...'



Venus. Your Revit Guide

2. USE IT

Once your family is loaded in, it will be located in the 'Project Browser/Families/Furniture' tab. Types are named in a way to ensure ease of selection. Click and drag your chosen item into your floor plan.



Venus. Your Revit Guide

3. CUSTOMISE IT

Once an item is selected it will turn blue, the properties panel will then display the parameters available. Here you will be able to make changes to the finishes. All material options will load in with the family, click the 'materials and finishes' parameter to view.

Please note— The fabric type will determine the fire rating. Please complete 'FireRating' Parameter once selection has been made.

