

Revit User Guide for



Volee

Version 1.0 | Revit 2015

July 2017

Created by



OceeDesign_StckngChrs_Volee

File Features

- Multiple Finishes (please see manufacture brochure)
- Multiple Types in File (see below)



Predefined Types

Family Type	Width	Depth	Height
Stacking Chair	515	520	870
Stacking Chair with Arms	660	520	870

OceeDesign_Stng_Volee

File Features

- Multiple Finishes (please see manufacture brochure)
- Multiple Types in File (see below)
- Optional Arm Visibility
- Optional Table Option for Each Position



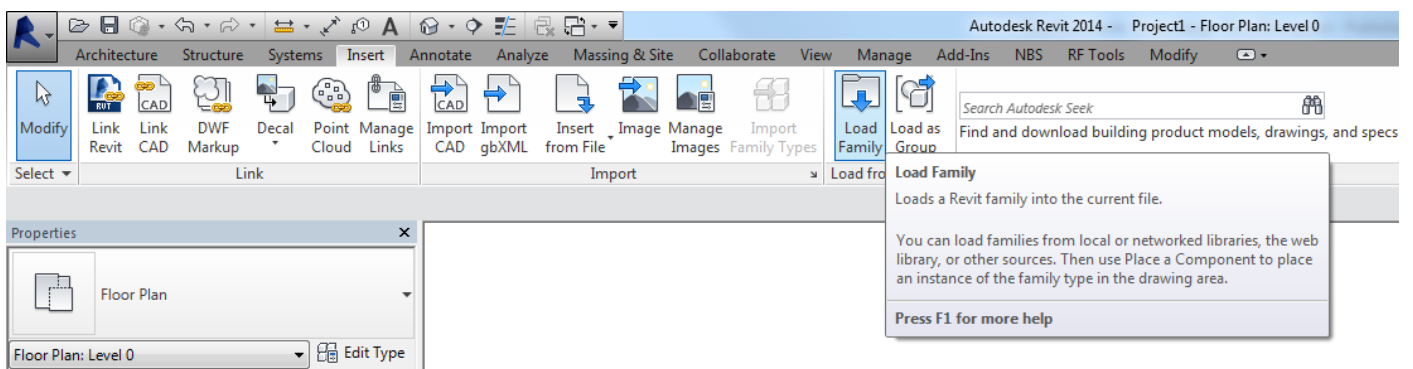
Predefined Types

Family Type	Width	Depth	Height
2 Items	1030	520	870
3 Items	1545	520	870
4 Items	2050	520	870

A simple guide to using your Revit Ready file.

1. LOAD IT

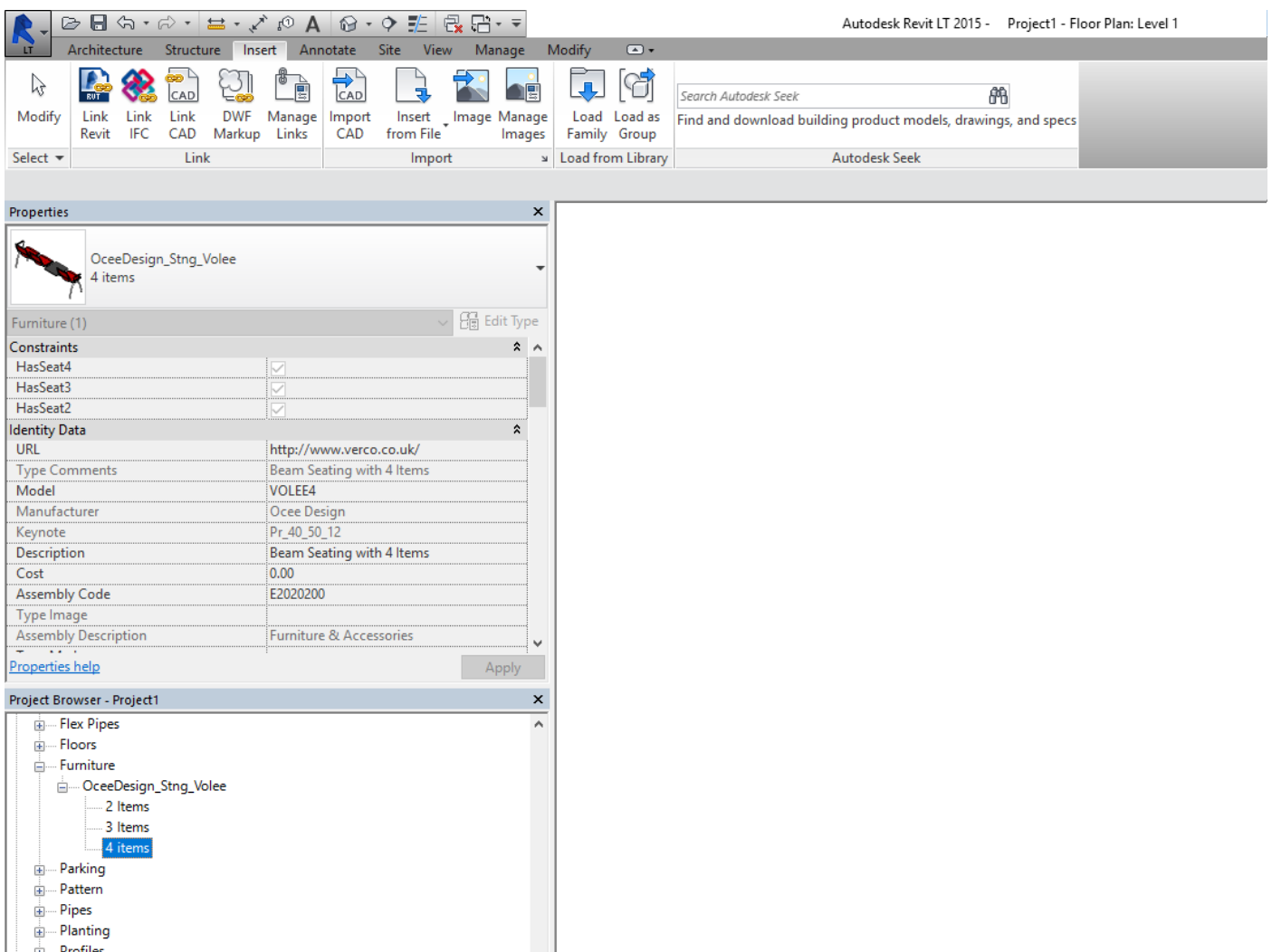
The range can consist of one or more Revit families, these contain predefined types as outlined above in the predefined types and the manufactures brochure.



A simple guide to using your Revit Ready file.

2. USE IT

Once your family is loaded in, it will be located in the 'Project Browser/Families/Furniture' tab. Types are named in a way to ensure ease of selection. Click and drag your chosen item into your floor plan.

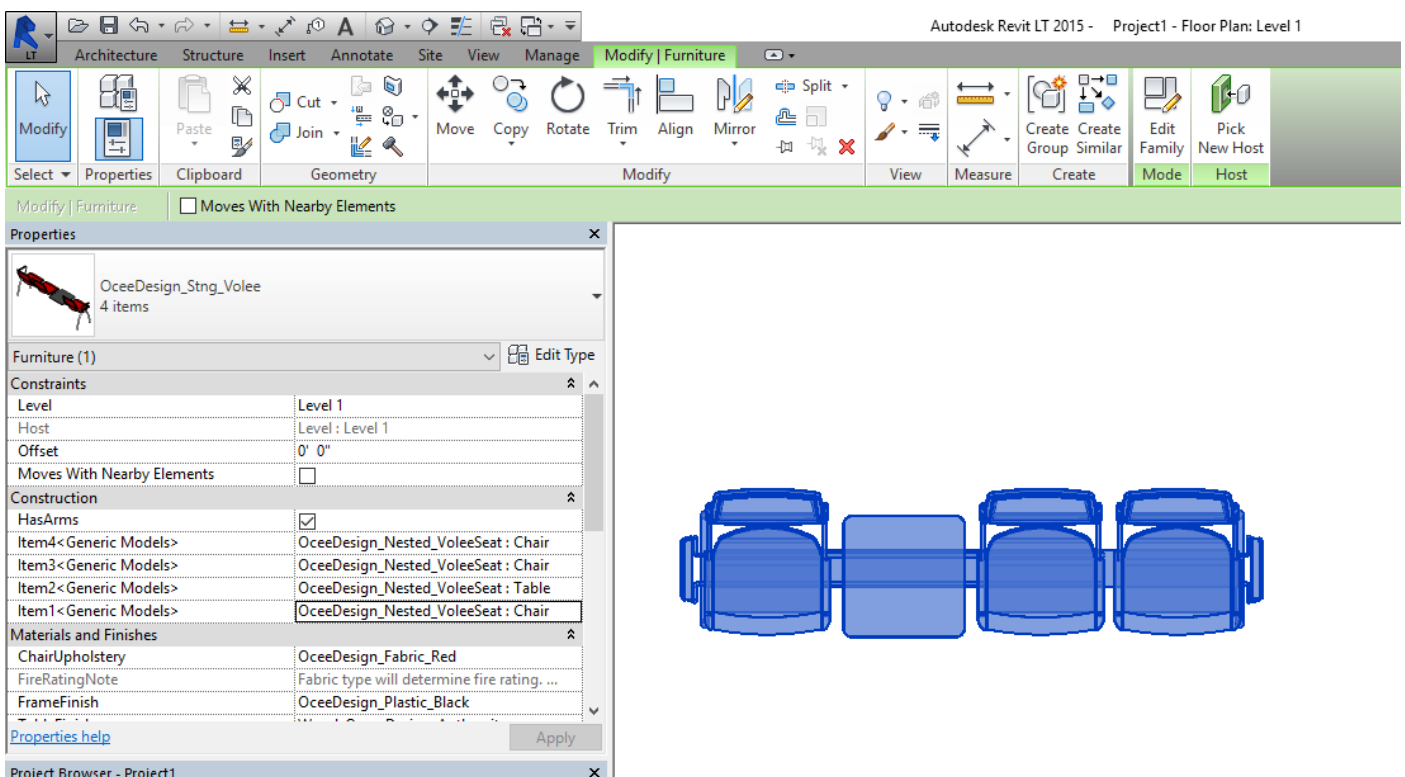


A simple guide to using your Revit Ready file.

3. CUSTOMISE IT

Once an item is selected it will turn blue, the properties panel will then display the parameters available. Here you will be able to make changes to the finishes. All material options will load in with the family, click the 'materials and finishes' parameter to view.

Each item 1-4 can also be changed to a relevant module, seat or table unit). Use the drop down list to make alterations.



Additional information

This component has been created by Diane Butterworth Ltd following the manufacturer's specification.

We hope our Revit files are a helpful tool in space planning and visualisation. We take care in ensuring all dimensions and features match manufacturer's literature, however actual product may vary slightly.

We would love to hear from you if you have any questions or feedback, please email hello@dianebutterworh.com

Thank you for using this BIM file,

